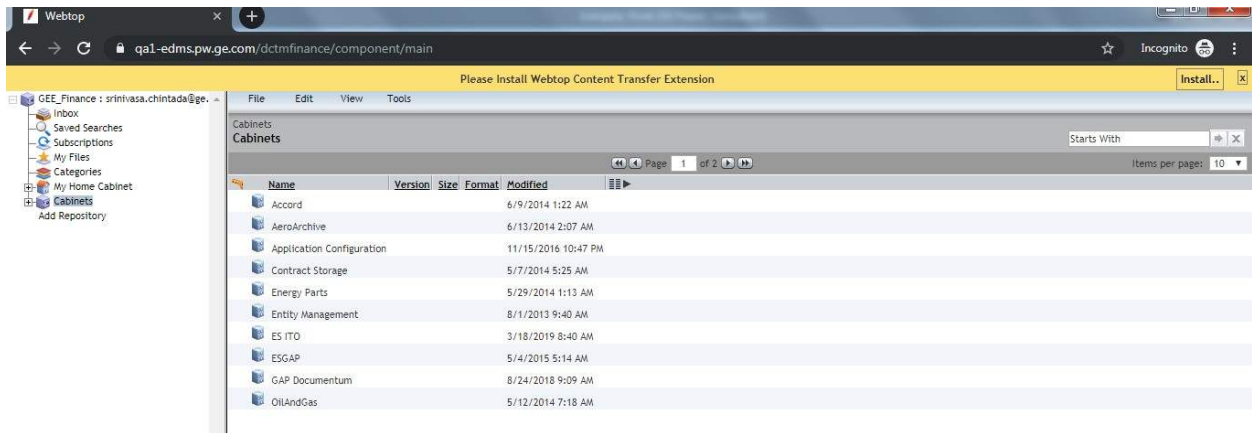


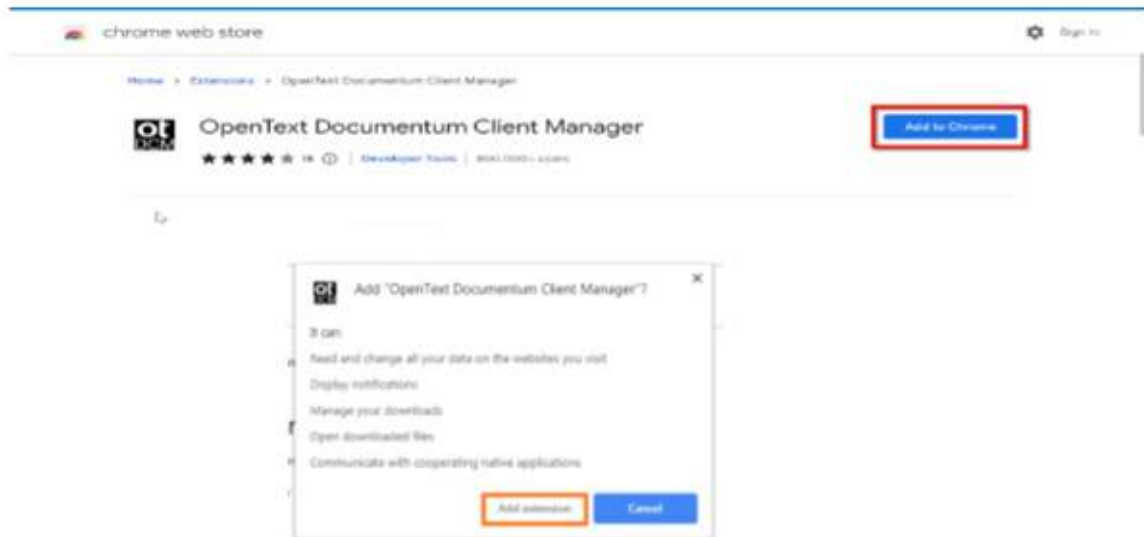
Documentum Plugin Installation Steps for Google Chrome & Microsoft Edge

Login to Documentum WebTop application Google Chrome or Microsoft Edge:
<https://collaborationspace.ge-energy.com/pweccollab/>

A banner will appear with the message **“Please Install Webtop Content Transfer Extension”**. Click **“Install”**.



You will be navigated to the Chrome Web Store. In the pop-up click **“Add to Chrome”** and then **“Add Extension”**.



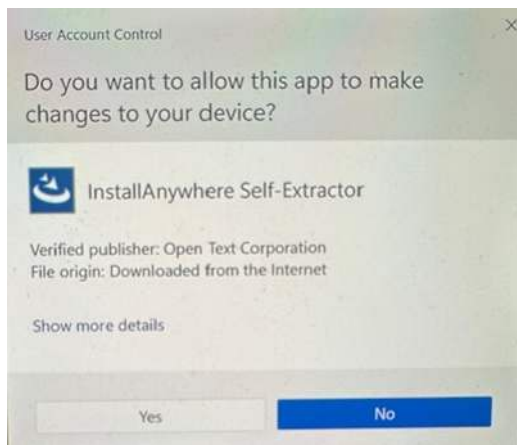
You will receive a message stating the Extension has been added. Close this browser tab and return to the tab where Documentum is open.

Refresh the browser, and a banner with this message will appear **“Please install WebTop Native Client”**. Click **“Install”**.

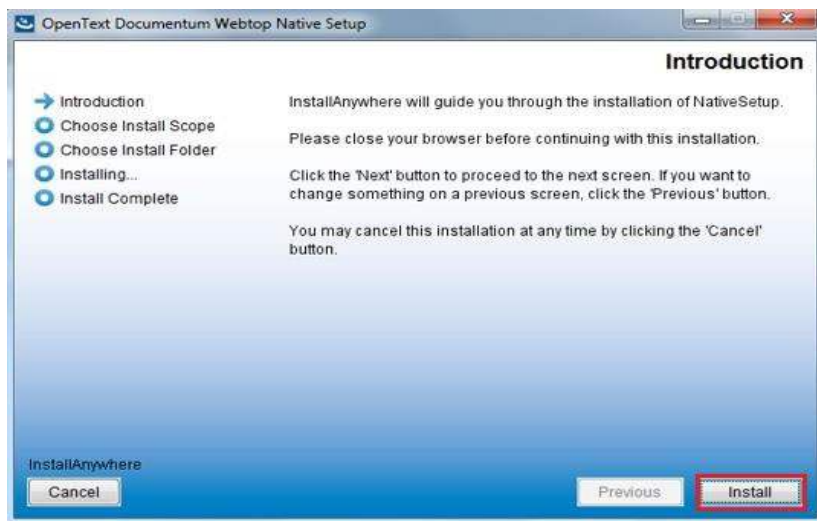


This will initiate the download of the setup file (**NativeSetup.exe**). Click on downloaded file, and this will start the installation process. A system pop-up will appear for your approval.

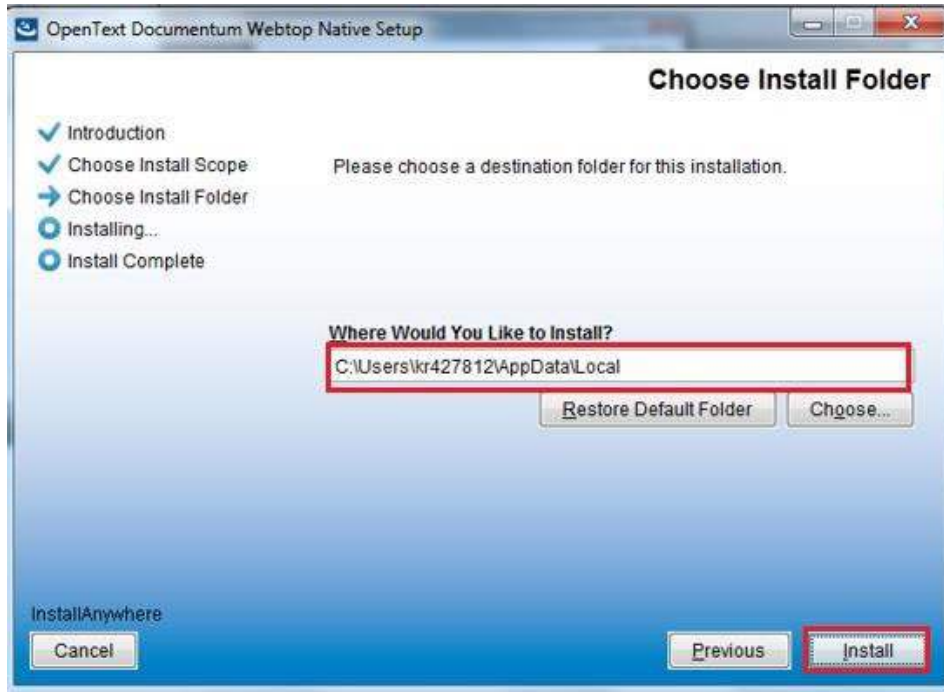
Click **“Yes”** on this pop-up.



Click **“Install”** on this page.



Select the installation directory, **default location recommended** and click **“Install”**.



After the installation is complete, click **“Done”** in the open dialog box. Refresh your browser for the changes to take effect. You are now ready to use Documentum.