

# PW Customer Collaboration Documentum

## Documentum To Box Synch

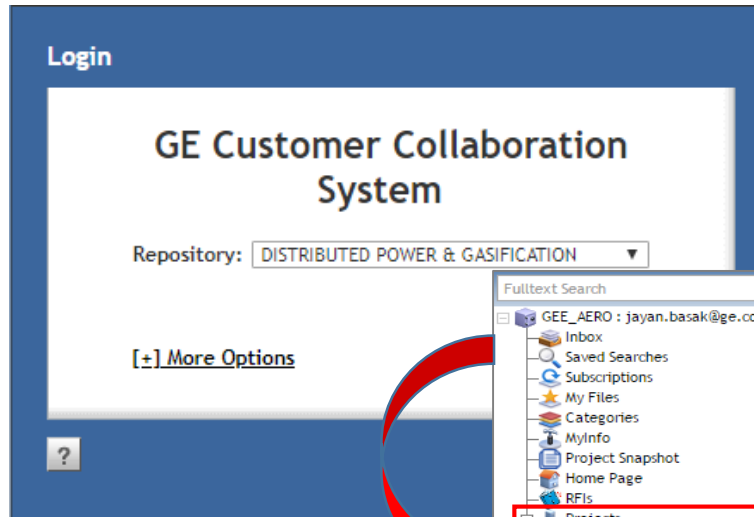
Revised: 11/19/18



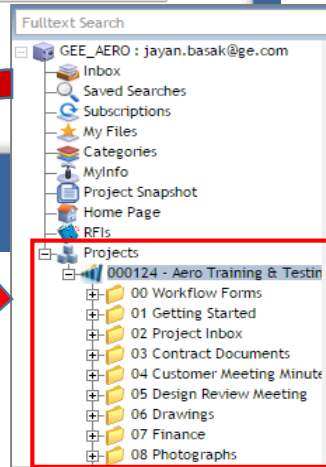
imagination at work

# Syncing steps from Webtop

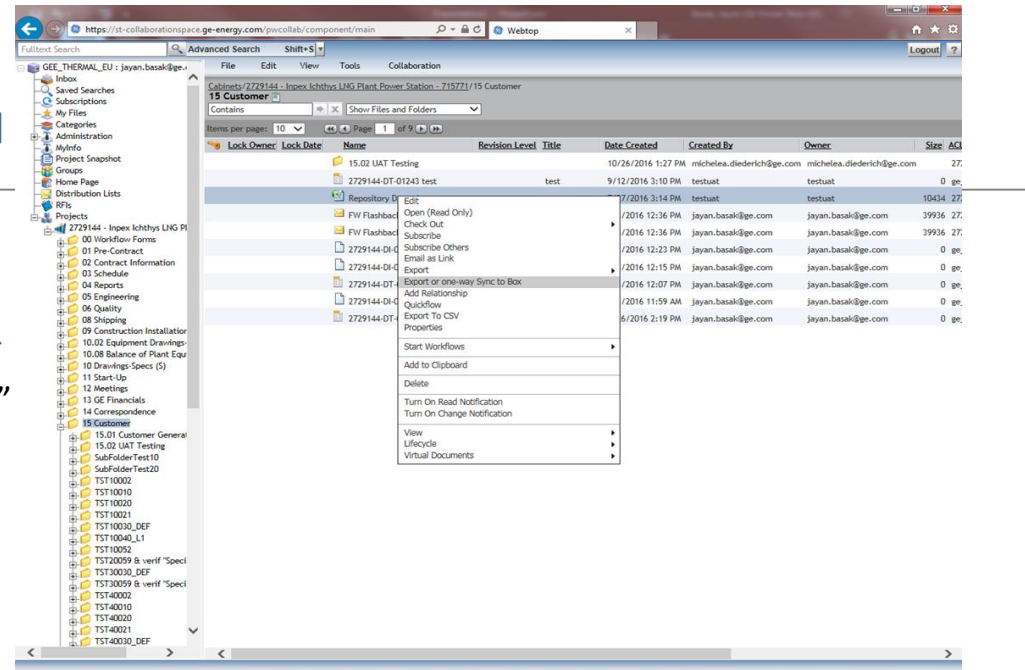
1.



2. Select the desired folder



3. Select the file(s)  
right click>“Export or one-way sync to Box”



\* Documents Only - No folders or forms

# Syncing steps from Webtop

**Publish and Sync Document(s) to BOX**

**IMPORTANT:** Synchronizing to Box is ONE-WAY, changes made in documentum will update Box.Changes made in Box WILL NOT update Documentum. When using this utility, a folder will be created in your Box directory called "Documentum Exports" and a project folder will be built under it.

**Options**

**Replicate Documentum's folder path in Box**   
*(If checked, the full documentum path of files selected will be created in the "Documentum Export" folder. If unchecked only the top level project folder will be created.)*

**Select the Publish and/or Sync options:**

**Publish selected file(s) to Box now (will take 5-10 minutes)**

**Synchronize my selected files Daily (Sync job runs daily around midnight EST)**

**Number of days for synchronization:**

**Documents Selected : 1**

**Please select or unselect the document(s) from the below list:**

Upload to Box	File Name	Size of the Document(in KB)	Description	Sync Status
<input checked="" type="checkbox"/>	Brava Test PDF Document.pdf	161	NEW	New Document

It takes 5-10 minutes to get a confirmation email(s):

- 1- 1<sup>st</sup> time synchronization will create a folder in Box and the users gets an email from "Box" to confirm the addition of the user to that folder
- 2- Documentum - Box Upload File Status

**Sync will stop when:**

- 1- The synced file get moved to a different folder, therefore, to keep the syncing valid, the user can "Copy" the file instead
- 2- The folder name gets changes