

# Documentum Plugin Installation Steps for browsers

## Executive Summary

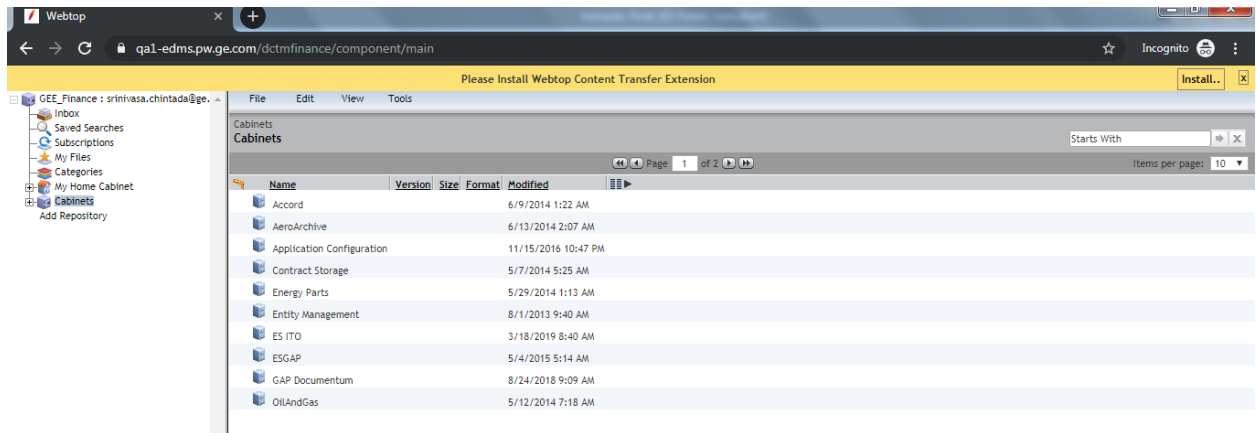
A new version of WebTop 16.4 has been deployed and one-time, mandatory plugin download is required per browser. **A setup file (NativeSetup.exe) is required to be installed once per computer.**

## Prerequisite for All browsers

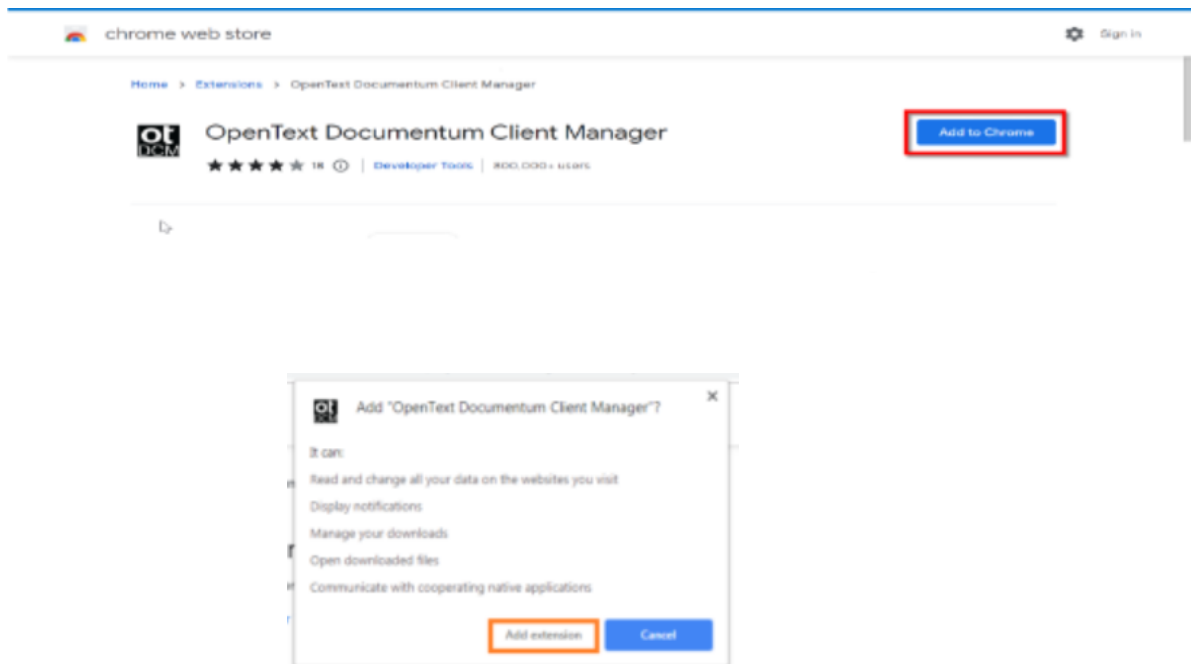
- ✓ Pop-ups must be allowed for Documentum URL.
- ✓ Clear your browser cache.
- ✓ 32-bit Java Version 8 (1.8.0\_152) or higher must be installed.
  - Both versions of 2013 Microsoft Visual C++ must be installed.
  - Microsoft Visual C++ 2013 Redistributable (x64)
  - Microsoft Visual C++ 2013 Redistributable (x86)

# Documentum Plugin Installation Steps for Google Chrome

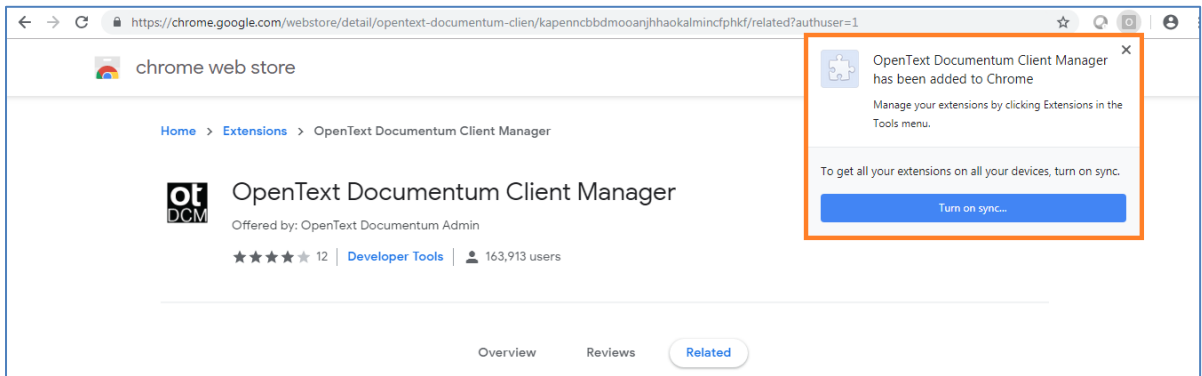
1. Login to Documentum WebTop application on your Google Chrome browser.
2. **Current** Documentum users skip Step 3 to Step 6. **New** Documentum users MUST follow all the steps.
3. A banner with message "**Please Install Webtop Content Transfer Extension**" appears below the URL bar. Click on the "**Install**" button.



4. You will be navigated to chrome web store, click on "**Add to Chrome**" and then "**Add Extension**" on the Pop-up.



5. You will receive a message stating that the Extension has been added to Chrome.

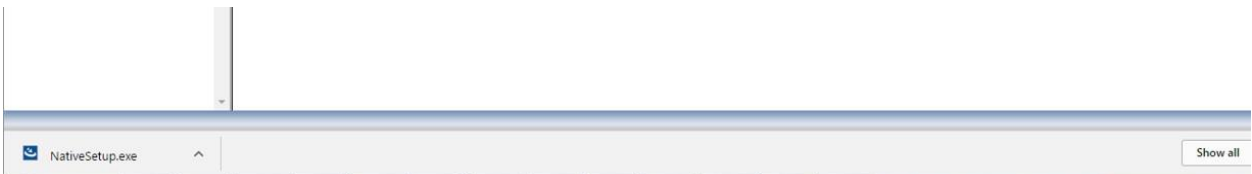


6. Refresh the browser(F5), and you will see this banner “Please Install WebTop Native Client”, **click** on the “Install” to initiate installation.

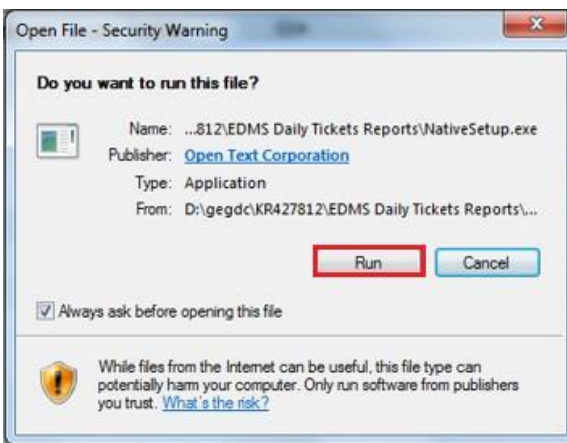


7. This will automatically initiate the download of the setup file (**NativeSetup.exe**). Click on the downloaded setup file in the lower left corner of the browser and this will start the installation process. A system pop-up will appear for your approval to begin installation.

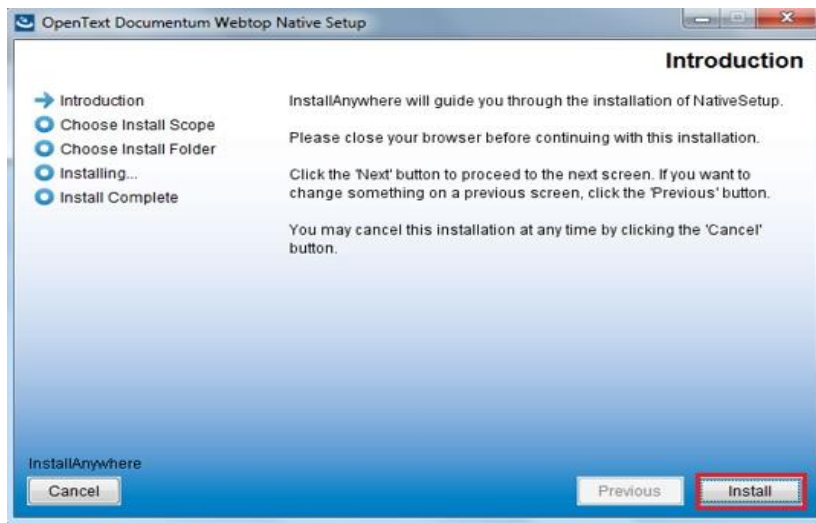
**Note: You don't need admin privileges in your system to run this file for Chrome.**



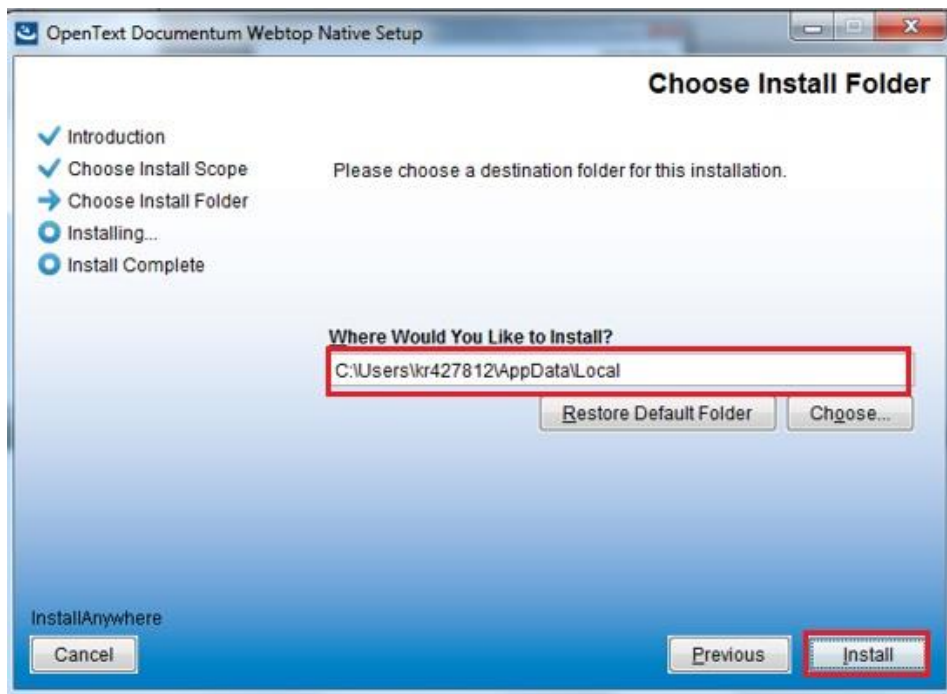
8. Click “Run” on this pop-up.



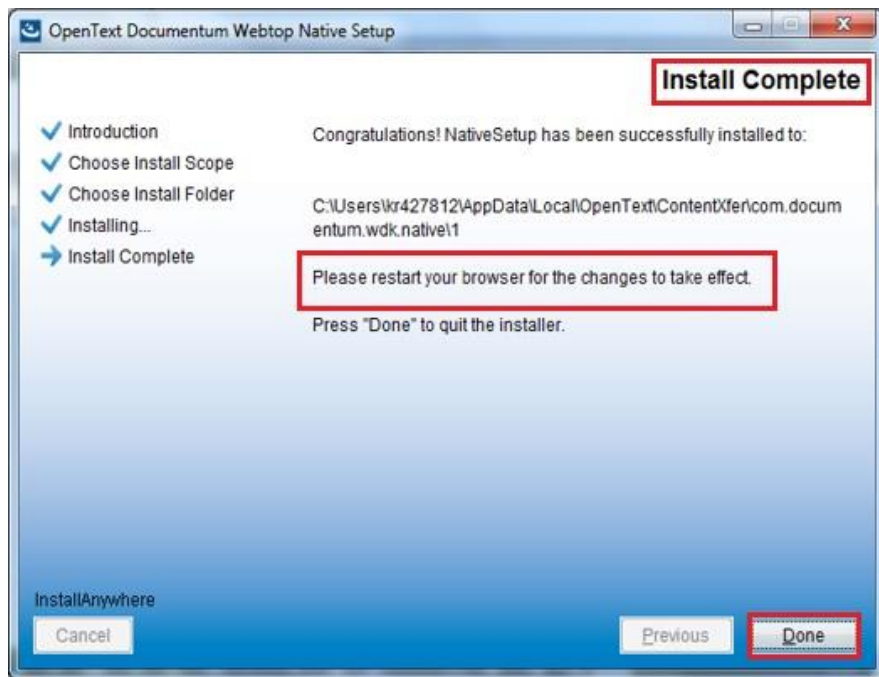
9. Click “Install” on this page.



10. Select the installation directory, Default installation directory (Recommended), And click on "Install" button.



11. After the installation is complete, you will get this page click "Done" button on this page. **Restart** your browser for the changes to take effect.

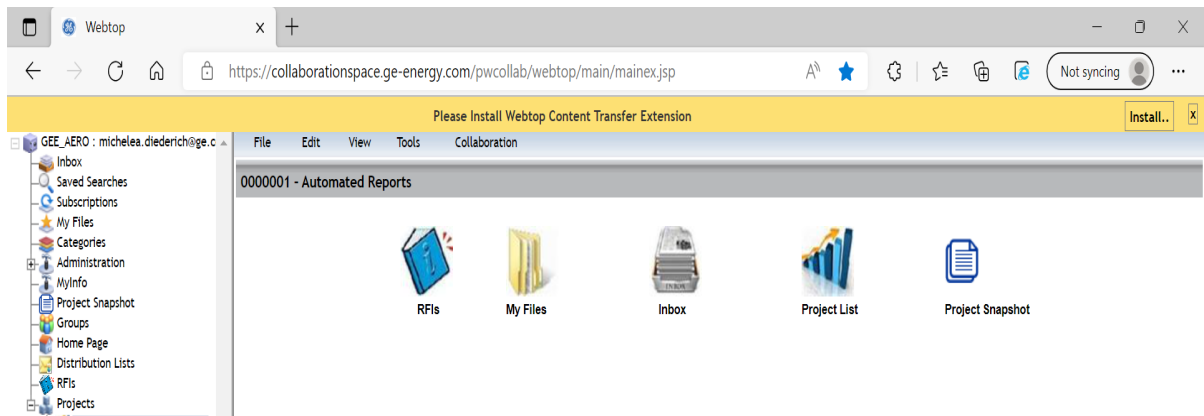


12. You are all set to use Documentum on Google Chrome.

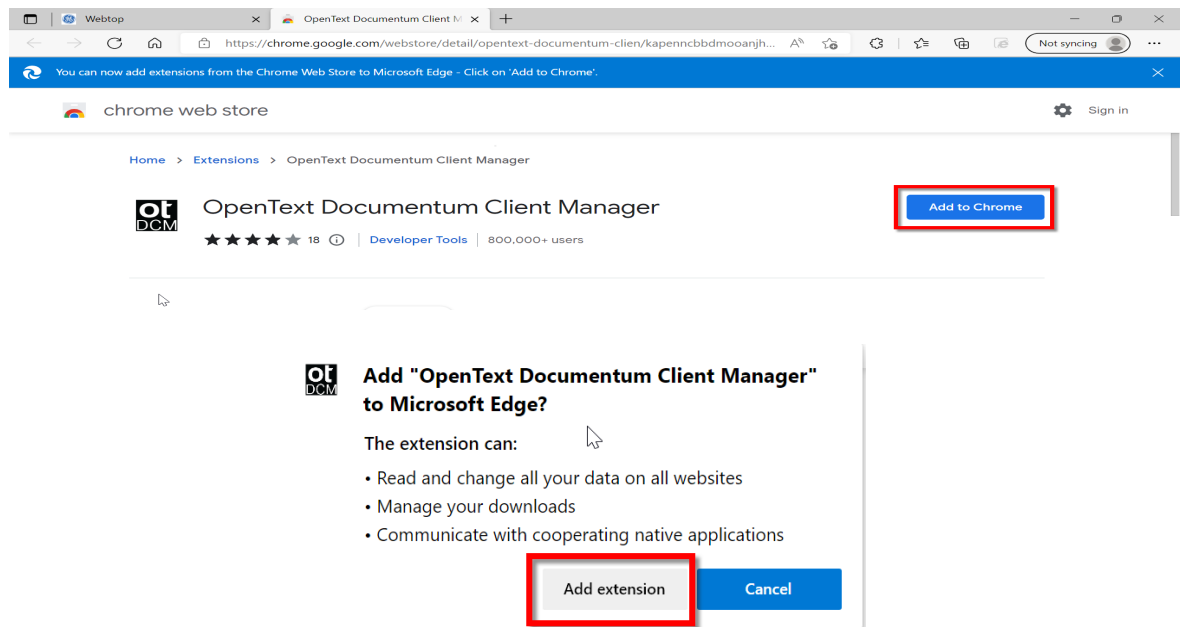
13. In case of any error, please contact: [ebusinesstechsupport@ps.ge.com](mailto:ebusinesstechsupport@ps.ge.com)

# Documentum Plugin Installation Steps for Microsoft Edge

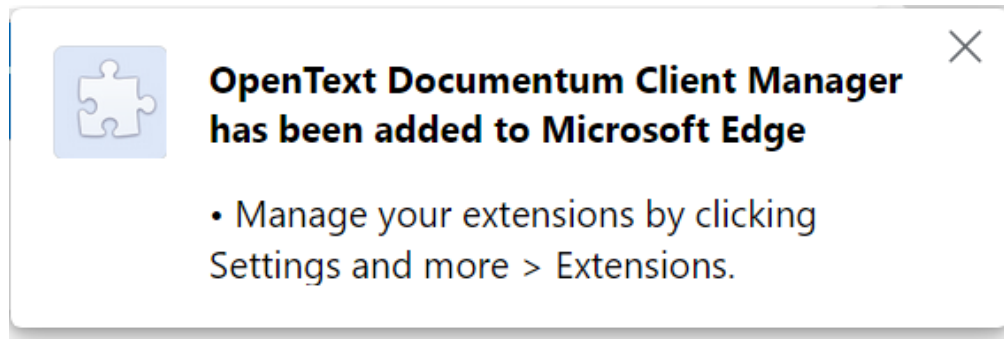
1. Login to Documentum WebTop application on your Microsoft Edge browser.
2. **Current** Documentum users skip Step 3 to Step 6. **New** Documentum users MUST follow all the steps.
3. A banner with message "**Please Install Webtop Content Transfer Extension**" appears below the URL bar. Click on the **"Install"** button.



4. You will be navigated to chrome web store, click on **"Add to Chrome"** then **"Add Extension"** on the pop-up.



5. You will receive a message stating that the Extension has been added to Microsoft Edge.

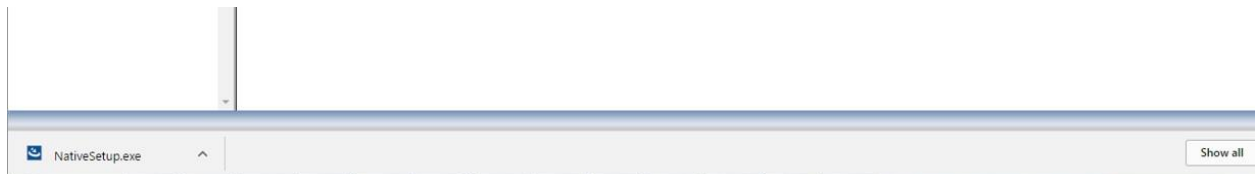


6. Refresh the browser(F5), and you will see this banner “Please Install WebTop Native Client”, **click** on the “Install” to initiate installation.

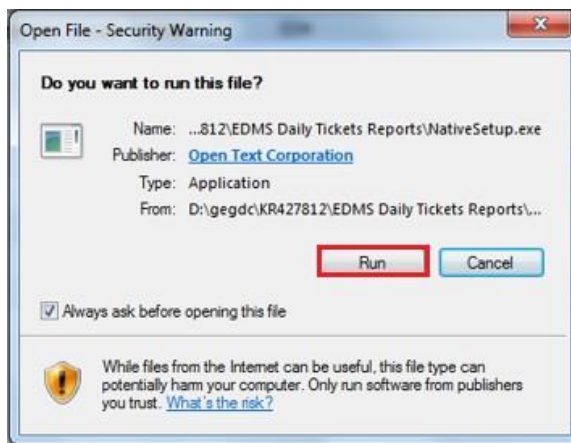


7. This will automatically initiate the download of the setup file (**NativeSetup.exe**). Click on the downloaded setup file in the lower left corner of the browser and this will start the installation process. A system pop-up will appear for your approval to begin installation.

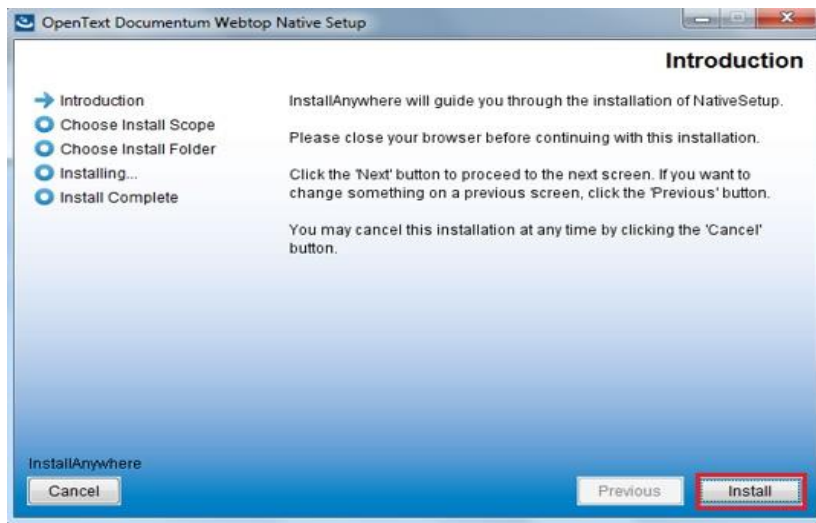
**Note: You will need admin privileges in your system to run this file for Microsoft Edge.**



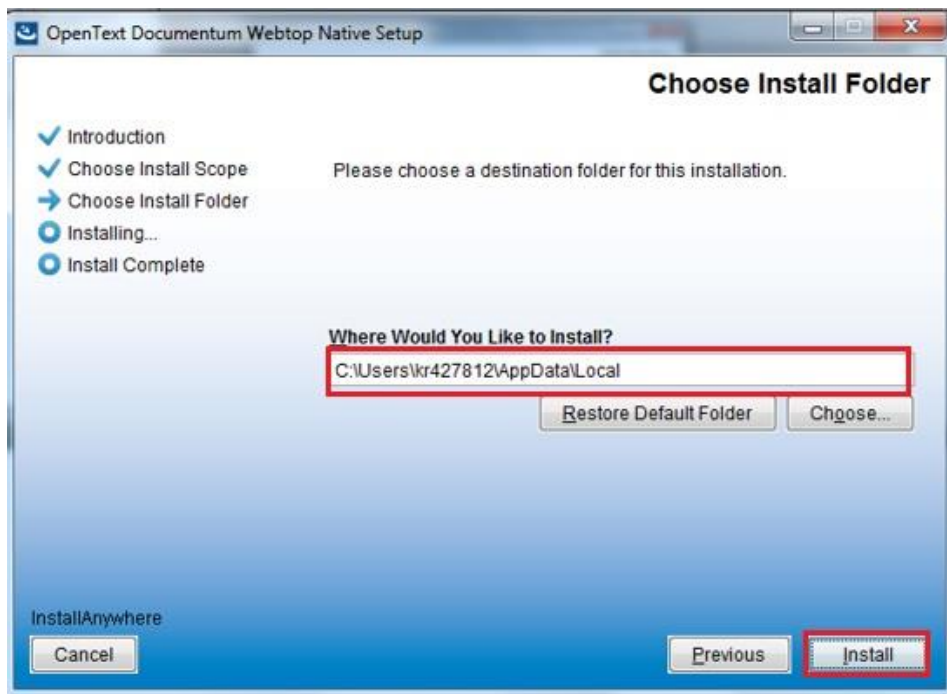
8. Click “Run” on this pop-up.



9. Click “Install” on this page.

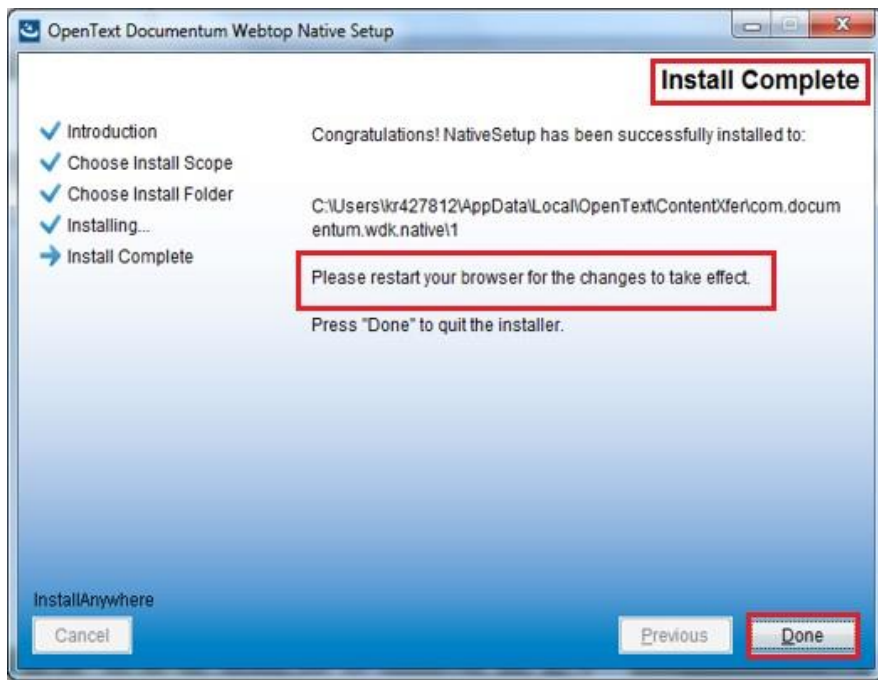


10. Select the installation directory, Default installation directory (Recommended), And click on “Install” button.



11. After the installation is complete, you will get this page click “Done” button on this page.  
**Restart** your browser for the changes to take effect.





12. You are all set to use Documentum on Microsoft Edge.

13. In case of any error, please contact: [ebusinesstechsupport@ps.ge.com](mailto:ebusinesstechsupport@ps.ge.com)